

Electrophotonic Imaging: A New Way of Measuring Wellness

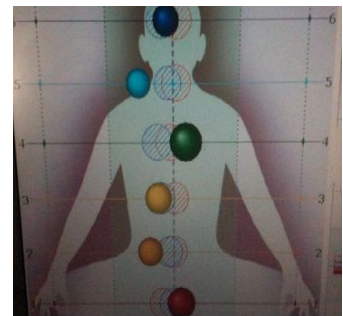
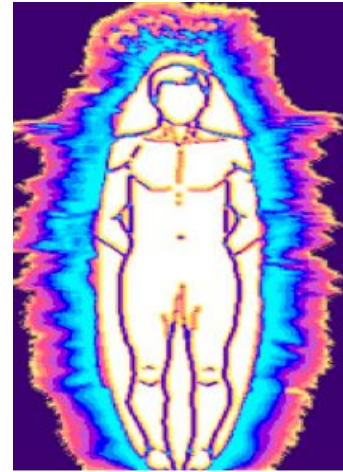
What is Electrophotonic Imaging (EPC)?

The field of Energy Medicine is growing quickly but is still in need of reliable monitoring instruments to assess the relative energetic state of human beings as it relates to health and disease.

Electrophotonic Imaging, or EPC, is a break through technology that measures human energy fields that surround the body. This amazing tool, invented by Visionary Biophysicist Konstantin Korotkov, captures photon (light) emissions from the ten fingers which act as electrical termination points for the 12 main meridians of the body. Once the emitted light is captured via camera, the images are analyzed with a sophisticated mathematical tool know as fractal dimensionality. In real time, we collect data measurements of the energy of chakras and glands/organs. By being able to measure the energy fields, we may be able to see patterns that could show physical problems later. Some of the applications of the EPC include:

- Locating actual physical areas of energy stagnation
- Demonstrating levels of vitality and stamina
- Studying effects of drug protocols
- Evaluating changes occurring after various forms of complementary modalities
- Measuring psychological and emotional states through chakra measurements.

Dr. Sam Berne is a pioneer in vision science, integrative health, and subtle energy therapies. He is an internationally-known author, researcher, facilitator, and teacher who uses a multidisciplinary approach applying a diverse variety of disciplines with respect to expanding human potential.



Cost is \$75 for a session.

www.DrSamBerne.com

