

# Science, Mysticism, Spirituality, Radiance of Love Retreat

with Dr. Sam Berne

October 7-10, 2010

At the beginning of this weekend workshop led by Sam, you will receive an energy field and chakra reading using Electrophotonic Imaging (EPC), a breakthrough technology that measures human energy fields surrounding the body. This amazing tool, invented by Russian biophysicist Konstantin Korotkov, captures photon (light) emissions from your ten fingertips and analyzes the images via a sophisticated mathematical program, in real time, you see data measurements of the energy of your chakras and glands/organs. Once your energy fields are measured, you will be able to influence their patterns through practices taught at the retreat.

**October 7** – Informal arrival: morning-late afternoon with evening program on Evidence-Based Science & Spirituality: Subtle Energies led by Dr. Sam Berne

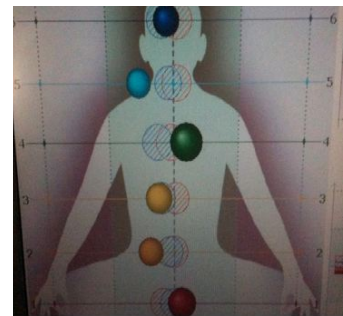
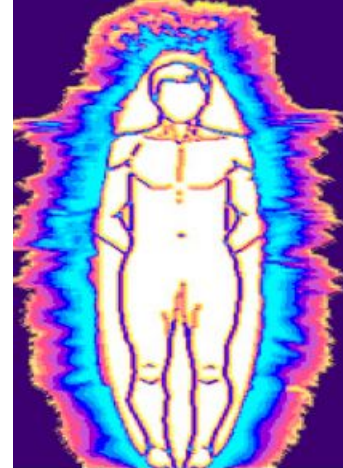
**October 7** afternoon thru October 8 morning – Measuring energy fields & chakras of each participant

**October 8**, noon – Formal program begins with lunch together and an opening circle. Followed by lecture on the principles of Electrophotonic Imaging and how we are using it to assess human energy fields and the vibration of water, with a discussion of research on vibration and healing around the world. How to inspire your own visions, both locally and globally. After a break and use of the “Shalom technique” to get to know one another, we’ll begin the powerful process of reviewing and analyzing the data of individuals’ energy fields and chakras.

**October 9**, After breakfast – Continuation of energy fields and chakra analysis. After lunch learn a primordial movement/sound process that helps improve our resonance, release trauma imprints, and move us into our cortical brain and morphic energy field of LOVE. Life-changing for some who received this training from Dr. Sam at his Esalen Institute seminars.

**October 9**, evening – Let’s vibrate together with drumming and readings of poetry (bring some to read!) and stories.

**October 10**, After breakfast. – Training in directing energy from the chakras to the hands to perform healings. Open discussion of questions. Concludes with lunch and a closing circle.



## To Register

Contact Dr. Sam Berne

- 227 E. Palace Avenue  
Suite G  
Santa Fe, NM, 87501
- 505 984-2030
- [www.DrSamBerne.com](http://www.DrSamBerne.com)
- [Sberneod@cybermesa.com](mailto:Sberneod@cybermesa.com)

Cost of Seminar: indiv., \$250;  
couples, \$240 each person.

Food: Bring your own to share

Location: Timshel Retreat  
Center, Montrose, PA  
Limited to 14 participants. There  
are 2 work study scholarships  
available.